

Please note: The Chippewa SWCD phone number has changed. The SWCD can be reached at 320-269-2696.

USDA NRCS can be reached by dialing 320-269-2139 ext. 3.

The purpose of the Chippewa Soil and Water Conservation District is to use available resources to meet the local natural resource needs.

2023 ANNUAL REPORT

Chippewa SWCD Presents George Kluempke and Roy Denne as
2023 Conservationists of the Year



Chippewa SWCD nominated George Kluempke and Roy Denne of KDK Partners as the 2023 Outstanding Conservationists for Chippewa County. Wildlife and habitat enthusiasts, George and Roy, along with the late Dave Kluempke, began KDK Partners in 1991. Over the years they have grown to own 345 acres in Chippewa County. Of that, 78 acres are in a Reinvest in Minnesota perpetual easement, 114 acres are enrolled into 5 different CRP practices, 40 acres are planted in annual and perennial food plots. Eighty six acres are cropped in a corn/soybean rotation annually. Since 2010, KDK has planted 2,300 trees which includes 7 field windbreaks and 4 wildlife block plantings. KDK partners also constructed a wetland on their property and their ag fields are heavily buffered along the Chippewa River. The SWCD enjoys and appreciates working with George and Roy annually as they manage and implement new habitat projects on their land.



Find us on Facebook! 

629 N. 11th Street, Montevideo, MN 56265 • 320-269-2696 • www.chippewaswcd.org

Chippewa Soil & Water Conservation District Projects

In 2023, Chippewa SWCD, together with their partners, cost shared on two construction projects and numerous vegetative practices. Total cost share paid out by Chippewa SWCD was \$22,587.40. We are currently working with engineering staff and landowners on several erosion control projects, vegetative practices and one rain garden for the 2024 construction season.

The Chippewa SWCD works with the West Central Technical Service Area engineers to survey and design projects. They also work with the Natural Resource Conservation Service, Chippewa County Land & Resource Management, Hawk Creek Watershed Project, Chippewa River Watershed Association, and Central Minnesota River Watershed Partnership to allow more funding opportunities for landowners.

The Chippewa Soil and Water Conservation District has cost share dollars available to landowners for installing or fixing conservation practices on private land in Chippewa County. Pending on location and project type, cost share dollars could offset 50-90% of the cost of qualifying conservation practices. Some examples of projects that would qualify include but are not limited to; cover crops, reduced tillage, water and sediment control basins, grade stabilizations, grassed waterways, terraces, critical area plantings, side inlets, field windbreaks, unused well sealing, and stream bank erosion, restoration, and protection. Call or stop by the office for more information.

Cost share will be available at a first come, first served basis, depending on SWCD board approval and available funding. When all cost share funds are encumbered for projects, any new projects may be put on a wait list for funding. Landowners with erosion problems on their property, big or small, are encouraged to stop in our office to discuss any issues. We can review available cost share programs, explore options, determine how to make a conservation practice work with your farming operation, and set up an appointment to do a site visit and conduct some preliminary surveying. Give us a call at **320-269-2696** or stop by the office located in the Chippewa County Courthouse.



Water & Sediment Control Basin



Water and Sediment Basin/Terrace
Repair



Water & Sediment Control Basin
Water Control Structure



Water and Sediment Control Structure Outlet



Multi Row Field Windbreak

Minnesota Agricultural Water Quality Certification Program

The Minnesota Agricultural Water Quality Certification Program is a voluntary opportunity for farmers and agricultural landowners to take the lead in implementing conservation practices that protect our water. Those who implement and maintain approved farm management practices will be certified and in turn obtain regulatory certainty for a period of ten years.

Through this program, certified producers receive:

- Regulatory certainty: certified producers are deemed to be in compliance with any new water quality rules or laws during the period of certification
- Recognition: certified producers may use their status to promote their business as protective of water quality
- Priority for technical assistance: producers seeking certification can obtain specially designated technical and financial assistance to implement practices that promote water quality

There are extra endorsements available to water quality certified producers for soil health, integrated pest management, and wildlife. These endorsements celebrate farms and landowners who are going above and beyond to implement conservation efforts on their land.

For more information call the SWCD at 320-269-2696.



Wetland Conservation Act

What to do before starting a drainage, excavation, or maintenance project that may impact a wetland?

1. If enrolled in the USDA Farm Program, complete an "AD1026" form with your local USDA office. FSA will also have you fill out a Wetland Conservation Act (WCA) Request Form that will be submitted to the SWCD/WCA Local Government Unit (LGU).
2. You will receive a response letter upon review of your request form. If you have specific questions on your project or the response letter, stop by the SWCD office to discuss your project.

The SWCD can advise if your project is allowed under the Wetland Conservation Act (WCA), or if you need to submit a Joint Project Application that will be reviewed by the SWCD/LGU, Chippewa County, DNR, and the US Army Corps of Engineers. ***Involving the SWCD early on is the easiest and best way to avoid problems with WCA!***

**Request a site review or field visit.* This can help identify wetlands on your property along with any regulation that could affect your project. Communication is key! Compliance with USDA does not mean compliance with other wetland laws such as the state WCA law. A quick call or stop into the SWCD office prior to beginning your project will help you comply with the law and could save a project from potential violations, additional cost, and delays.

The Wetland Conservation Act promotes a no-net-loss of wetlands and protects the benefits that wetlands provide. The Act moves toward its no-net-loss goal by requiring a person proposing to drain or fill a wetland to:

- 1) Try to avoid wetland disturbance.
- 2) Try to minimize any wetland impacts.
- 3) Replace any lost wetland functions and values.

Contact Zach Bothun with any questions regarding WCA at 320-269-2695



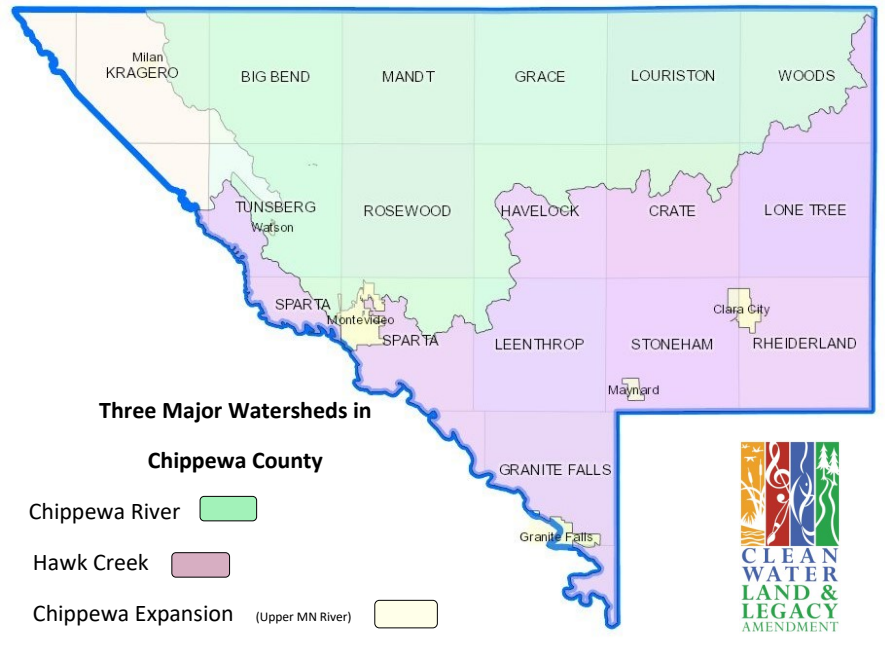
Watershed Based Implementation Funding

Chippewa County is comprised of two Comprehensive Watershed Management Plan areas: The Chippewa River and Hawk Creek – Middle Minnesota River Watersheds. Both watersheds are represented by joint powers entities made up of SWCD Supervisors and County Commissioners from the partnering counties that fall within the watershed boundaries. The Chippewa River watershed is represented by the Chippewa River Watershed Association (CRWA) and the Hawk Creek – Middle Minnesota River watershed is represented by the Central Minnesota River Watershed Partnership (CMRWP).

The CRWA is soon to have an approved plan with a pending \$2.2 million dollars coming for the first of five funding rounds over the next 10 years. The CMRWP has already received and encumbered projects for its first round of funding (\$942,433) and has received additional grant funds of \$53,000, \$397,003, and \$1.5 million. Both watersheds aim to fund practices that address priority practices and resource concerns that are spelled out in their respective Comprehensive Watershed Management Plans.

Chippewa County is well represented in both plans and includes high priority areas for potential funding opportunities. If you have a resource concern on your property, stop in to visit with local SWCD or county staff and they will dig

through the criteria and pursue funding for eligible practices. For more information about One Watershed One Plan, Watershed Based Implementation Funding, and what may be available to you in your watershed, please contact Zach Bothun with the Chippewa SWCD at 320-269-2695 or JoAnn Blomme with Chippewa County at 320-269-6231.



Cost Share Funding and Incentives To Fix Your Erosion Problems.

As always, the district has funds available for funding projects and practices that address resource concerns. Many of our funds are tied to priority areas due to comprehensive watershed planning efforts, but that doesn't mean we won't investigate funding a project anywhere in Chippewa County. If you have a large gully or washout in your field, if you wish to install that rain garden in the corner of your lot to address runoff and reduce mowing, or if you want to try a reduced tillage or cover crop practice because you are sick of seeing valuable topsoil blow off your field during the winter, please stop into the office to discuss your concerns!

Stop by the office if you have anything that resembles the pictures to the right:



Walk-In Access 2024

Walk-In Access (WIA) provides public hunting on private land in Minnesota and pays landowners to allow that access. Through WIA, nearly 29,000 acres of private land is open for public hunting from Sept. 1 to May 31. An atlas of hunting parcels is available online at www.mndnr.gov/walkin, at retailers within the WIA area, or by calling the MN DNR at 888-646-6367. Enrollment period starts in March and runs through mid April. Payment rate will be \$18/acre.



- ◆ Purchasing a \$3.00 WIA validation with another hunting license is required and allows hunting on WIA parcels from Sept. 1 to May 31, one-half hour before sunrise to one-half hour after sunset. WIA validations are available at any DNR licensing vendor.
- ◆ Landowner participation is crucial to this program, so be respectful and ethical while hunting WIA parcels. No target practice, trapping, dog training, or walking, camping, horseback riding, hiking, fires, or similar activities are allowed by the public.
- ◆ All hunting regulations apply on WIAs and will be enforced by DNR conservation officers.
- ◆ WIA parcels are for walk-in traffic only. Motorized vehicles of any kind are not allowed on WIAs. Parking is along roads or in designated parking areas.
- ◆ WIA seeks landowners with parcels of 40 acres or more with high quality natural cover. This may include, but is not limited to, parcels already in a conservation program. Only small inclusions of crop or hay land may be present.
- ◆ Local Soil & Water Conservation Districts (SWCDs) enroll landowners in WIA. WIA agreements are voluntary and include an opt-out clause.
- ◆ WIA allows landowners to carry out habitat management according to an approved conservation plan. Therefore, some sites may not have high quality habitat. Site updates are available at www.mndnr.gov/walkin.
- ◆ Call Chippewa SWCD at 320-269-2696 if you are interested in enrolling in WIA.

The Walk-In Access program is funded by:

- ◆ A grant from the Natural Resources Conservation Service, U.S. Department of Agriculture, under number 69-3A75-16-509.
- ◆ A one-time appropriation from the State Legislature in 2012.
- ◆ A \$5.00 surcharge on nonresident hunting licenses.
- ◆ Donations of \$1, \$3 or \$5 made by hunters when purchasing deer and small game licenses.



Minnesota Conservation Reserve Enhancement Program



The Conservation Reserve Enhancement Program (CREP) is a combination of Conservation Reserve Program (CRP) and the Reinvest in Minnesota (RIM) program. Administered by the USDA-Farm Service Agency (FSA) and the Board of Water & Soil Resources (BWSR), CREP targets high-priority conservation issues identified by local, state, or tribal governments or non-governmental organizations. The proposed federal, state, and local partnership permanently retires environmentally sensitive land using the nationally-recognized RIM program. This is accomplished by establishing conservation practices via payments to farmers, ranchers, and agricultural land owners.

Sign-up and “batching periods” will continue to be used throughout the duration of the MN CREP until the total 60,000-acre goal is met. Contact the Chippewa Soil and Water Conservation District for the next sign-up date. When landowners enroll land into CREP they will receive Conservation Reserve Program (CRP) payments for up to 15 years as well as an up-front Reinvest In Minnesota (RIM) easement payment. The MN CREP targets four voluntary perpetual conservation practices:

- ◆ CP2 Wellhead Protection
- ◆ CP21 Filter Strips
- ◆ CP23 100-year Floodplain Wetlands
- ◆ CP23A Non-100-year Floodplain Wetlands

Due to the Minnesota State Buffer Law, land that is required to be established in a perennial buffer may not qualify for a new CREP application. The land that is required to be in a buffer by law, (16.5 along ditches and 30-50 feet along protected water) may have to be donated depending on the new farmbill.

The filter strips can range from 30’ to 350’ in width and will meet NRCS standard 393 criteria for water quality, wildlife habitat, flooding and farm ability. CP21 filter strips can be utilized to square up fields where ditches run at an angle and where tile intakes are too hard to farm around along ditch systems.

If applicable, land may also be enrolled into a RIM only contract. RIM contracts will be perpetual easements using the RIM only rates and will not include 15 years of CRP payments like in the CREP program.

If you have any questions about CREP or RIM, or to discuss potential eligibility of your land, please contact Tom Sletta by stopping in the office or calling 320-269-2693.

Chippewa SWCD Native Grass Seed & Seeding Program

Chippewa SWCD sells native grass seed and continues to provide native grass seeding services. To ensure a spot on the schedule, contact SWCD staff early to be considered for the service.

In 2023, the District seeded 22 sites for a total of 85 acres. Seeding sites consisted of CRP, buffers, pollinator plots, and other non-program related acres.

Seed drill service includes an operator, tractor, and seed drill. The price for seeding is charged by the number of acres planted plus a mobilization fee:

\$125 flat rate mobilization fee within Chippewa County (add \$1.00 per mile for out of County projects)

\$25/acre planting fee (\$100 minimum planting fee for 4 acres and less)

\$75/hour for broadcast seeding

Spring seeding of warm season grass and forbs is typically done between May 15th and June 30th. Dormant seeding is typically done after November 1st.

To discuss your seeding needs, order seed, or get on the seeding schedule, please contact Zach Bothun or Tom Sletta at:

320-269-2695 – Zach Bothun

320-269-2693 – Tom Sletta



Conservation Reserve Program in Chippewa County

By: Daniel Lussenhop, USDA-FSA

The Conservation Reserve Program (CRP) allows participants to enroll acreage in conservation practices that will reduce soil erosion, improve water and soil quality, and provide habitat for wildlife.

CRP participation is a voluntary program for landowners or operators. Eligible landowners or operators enter into a contract with the federal government that typically ranges from 10 to 15 years in length. In return, contract holders receive annual rental payments, incentive payments, and cost share for establishment of the practice.

December 2023 ended with 1,123 active contracts in Chippewa County covering 10,208 total acres.

The table shown is a breakdown of the land currently enrolled in CRP, in various practices.

Chippewa County Land in CRP	
CRP Practice Type	Acres
Regular	8,157
SAFE	1,099
CREP	314
Clear 30	83
Grasslands	38
General	518

If you have land that you feel would benefit from a conservation purpose, please contact our office to discover the eligibility requirements or visit [Conservation Resources for Farmers and Landowners- Farmers.gov](https://www.farmers.gov). We will help you any way that we can!

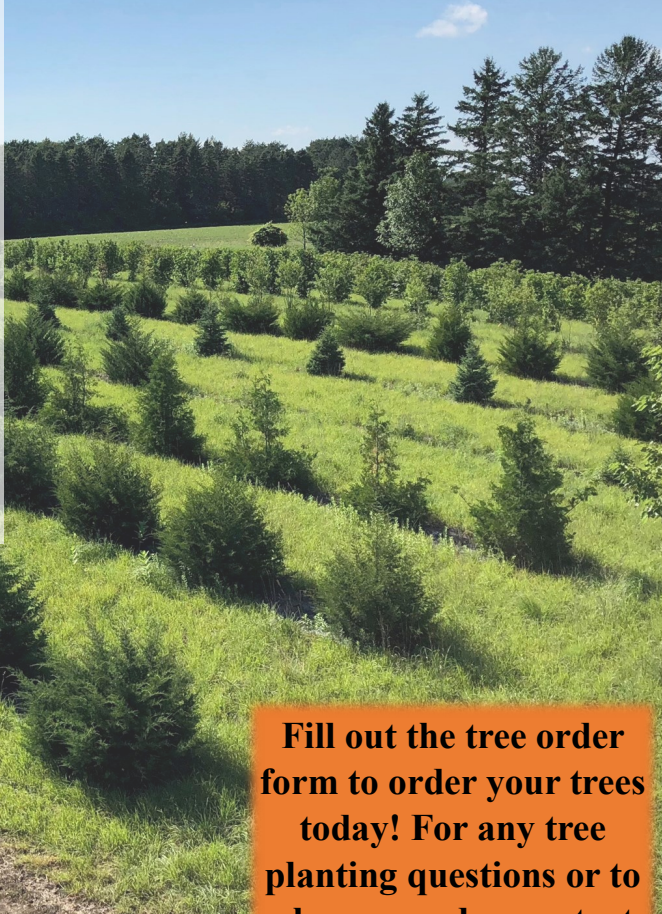
2023 Tree Planting Report

The 2023 tree planting season was similar to many previous successful seasons for the District. There were roughly 3,155 trees planted in farmstead shelterbelts, field windbreaks, and wildlife plantings. There were 17 farmstead shelterbelts, 3 field windbreaks, and 2 wildlife plantings. The field windbreaks totaled 4,830 feet in length.

In addition to the trees there was 21,982 feet of weed barrier fabric installed to control weeds, conserve moisture, and accelerate tree growth. The fabric is a 6 foot wide geo-textile material that allows moisture to pass through it but does not allow weed growth to occur. Light disking or planting cool season grasses and mowing periodically between the trees is still recommended to control weeds between the tree rows.

Cost share was available to landowners with the qualifying practices and was used to offset the cost of the trees and fabric.

Landowners who are thinking about planting trees this spring should stop in ASAP to develop a tree plan, discuss site prep needs, and order the trees while supplies are available.



Fill out the tree order form to order your trees today! For any tree planting questions or to place an order, contact Tom Sletta at 320-269-2693. tom.sletta@swcd.chippewa.mn <https://www.chippewaswcd.org/>

Tree Order Pick-Up Day

Chippewa SWCD will have a small tree order pick-up day for those who order trees to plant on their own. The trees are usually delivered in mid to late April. The district will send out notification to all who submitted tree orders with an exact day, time-frame, and location information for pick-up. The location for pick-up will be at the district's storage building located on the north side of the Chippewa County Highway Department garage. Chippewa SWCD asks that if you cannot pick up your trees that you find someone who can pick them up for you. Customers will be asked to pay for their trees at the time they are picked up. If you have any questions, please contact Chippewa SWCD at 320-269-2696.





629 N. 11th St., Suite 7
Montevideo, MN 56265
Phone: 320-269-2696

Name:

Address:

Phone:

BAREROOT DECIDUOUS TREES	PRICE	QTY	TOTAL
Ash, Green	\$ 2.35		
Aspen, Quaking	\$ 3.00		
Birch, Paper	\$ 2.15		
Cottonwood	\$ 2.35		
Crabapple, Red Splendor	\$ 2.30		
Hackberry	\$ 2.15		
Linden, American	\$ 2.60		
Maple, Silver	\$ 2.10		
Maple, Sugar	\$ 2.30		
Oak, Bur	\$ 2.10		
Oak, Red	\$ 2.10		
Oak, White	\$ 2.10		
Oak, Swamp White	\$ 2.40		
Walnut, Black	\$ 2.25		
Willow, Hybrid	\$ 2.10		
SUBTOTAL			

LARGE BAREROOT TREES	PRICE	QTY	TOTAL
Autumn Blaze Maple 6-8'	\$ 41.00		
Haralson Apple	\$ 50.00		
Honeycrisp Apple	\$ 50.00		
Sweet 16 Apple	\$ 50.00		
SUBTOTAL			

BAREROOT SHRUBS	PRICE	QTY	TOTAL
Buffaloberry, Silver	\$ 2.30		
Chokecherry, Common	\$ 2.15		
Cotoneaster	\$ 2.20		
Cranberry, Highbush	\$ 2.30		
Dogwood, Redosier	\$ 2.10		
Hazelnut, American	\$ 2.50		
Lilac, Common Purple	\$ 2.10		
Nannyberry	\$ 2.10		
Plum, American	\$ 2.25		
Serviceberry, (Juneberry)	\$ 2.20		
Willow, Flame	\$ 2.25		

BAREROOT CONIFERS	PRICE	QTY	TOTAL
Cedar, Eastern Red 15-18"	\$ 2.15		
Cedar, Northern White 12-18"	\$ 3.20		
Pine, Austrian 7-15"	\$ 2.75		
Pine, Ponderosa 7-15"	\$ 2.75		
Spruce, Black Hills 7-15"	\$ 2.65		
Spruce, Colorado 7-15"	\$ 2.65		
Spruce, Meyer 6-12"	\$ 3.00		
SUBTOTAL			

NOTES:

POTTED TREES	SIZE	PRICE	QTY	TOTAL
Cedar, Eastern Red	15-18" 1 gal.	\$ 13.00		
Cedar, Eastern Red	18-24" 2 gal.	\$ 19.00		
Cedar, Northern White	15-18" 1 gal.	\$ 13.00		
Cedar, Northern White	18-24" 2 gal.	\$ 19.00		
Pine, Austrian	18-24" 2 gal.	\$ 19.00		
Pine, Ponderosa	12-18" 1 gal.	\$ 13.00		
Pine, Ponderosa	18-24" 2 gal.	\$ 19.00		
Spruce, Black Hills	15-18" 1 gal.	\$ 13.00		
Spruce, Black Hills	18-24" 2 gal.	\$ 19.00		
Spruce, Black Hills	24-30" 2 gal.	\$ 20.00		
Spruce, Colorado	15-18" 1 gal.	\$ 13.00		
Spruce, Colorado	18-24" 2 gal.	\$ 19.00		
Spruce, Colorado	24-30" 2 gal.	\$ 20.00		
Spruce, Meyer	12-18" 1 gal.	\$ 13.00		
Spruce, Meyer	15-18" 2 gal.	\$ 19.00		
Spruce, Norway	15-18" 1 gal.	\$ 13.00		
Spruce, Norway	18-24" 2 gal.	\$ 19.00		
SUBTOTAL				

OTHER	PRICE	QTY	TOTAL
Fabric Installed	\$.60 / ft.		
Fabric Uninstalled	\$.50 / ft.		
Staples	\$.10 / pc.		
Tree Tubes	\$ 4.00 /ea.		
Machine Planted bareroot	\$.50/tree		
Machine Planted 1 gal. pot	\$ 1 / tree		
SUBTOTAL			
Sales Tax			
TOTAL	6.875%		

ALL PRICES SUBJECT TO CHANGE.

All bareroot trees are 18-24" unless otherwise specified. Larger sized bareroot prices depend on nursery pricing and availability as well as quantity order. **Contact staff for special orders. Special orders are sold by the bundle.**

The SWCD will machine plant up to 24" bareroots and 1 gallon pots only. No hand planting of larger pots will be offered. Landowners may purchase them to plant on their own.

The Chippewa SWCD guarantees that the trees planted by district staff are alive and will grow. Trees that fail to take hold must be reported by July 15 of the planted year and may be replaced at cost the following year per SWCD policy. We cannot guarantee that trees will survive drought, rodent/insect damage, winter kill, mechanical or chemical destruction, or improper planting by landowner. Trees planted by anyone other than SWCD staff will not be guaranteed. Trees planted in sod will not be guaranteed.

Minimum fabric installation charge of \$150 plus materials and tractor time for installs less than 250'.

Minimum planting charge of \$150 plus materials per planting less than 300 trees.

Signature:

Date:

Conservation Education

In 2023, the SWCD partnered with other conservation agencies to host Women's Field Day and a booth at the Chippewa County fair. Chippewa SWCD also assisted in the a "Pollinators, Pints & Popcorn" event that was held in Montevideo.



This year's Women's Field Day focused on "Nature's Grocery Store". The evening event was held at the Chippewa County Park in Wegdahl.

Approximately 30 women from Chippewa County attended. Guest speakers were herbalists Connie

Karstens and Clara Rathke of The Lamb Shoppe near Hutchinson. Connie and Clara shared their family's journey into holistic nutrition and herbal medicine.



Guests of the event were able to try dandelion root and sweet cicely herbal teas as well as a salad made from the wild edible plant purslane. Attendees were taught how to make a tincture using yarrow and olive oil. Following the presentation, Connie and Clara continued to share their wealth of knowledge by taking guests on a walk to search for medicinal plants and wild edible plants that are in our own



backyards. Many medicinal and edible plants were found, including plantain, dandelion, nettle, chickweed, violet, black walnut, stinging nettle, burdock, creeping Charlie, cottonwood, and yarrow. The conservation agencies provided a sample of The Lamb Shoppe's Flower Power Tea and Sweet Dreams Tea and each guest was given a sample of yarrow salve.



In July, the SWCD hosted a booth at the Chippewa County Fair. This year we focused on how the SWCD can serve your conservation needs. The SWCD also held a drawing for 10 potted black hill spruce and handed out pollinator seed mix packets.



In March, Chippewa SWCD, Chippewa County, and Kandiyohi SWCD, on behalf of the Chippewa River Watershed Association (CRWA), hosted "Pollinators, Pints & Popcorn" at Talking Waters in downtown Montevideo. Guest speaker at this event was Pollinator Conservation Specialist Karin Jokela from Xerces Society. Karin taught guests about pollinators and their importance in our ecosystem. As a snack, popcorn from our local Millenium Popcorn Company was served and guests were able to purchase a pint of their favorite local brew. This event was funded in part by the Minnesota Pollution Control Agency's Watershed Restoration & Protection Strategy and Chippewa River Watershed Association's Public Participation Plan.

Low-Interest Loan Programs for Well and Septic Improvements

Seal of Approval



9 wells sealed in 2023

Contractors continue sealing old or unused wells with cost-share assistance. Abandoned wells or damaged wells are a direct source for underground water pollution.

Property owners in Chippewa County can apply for cost-share assistance of up to 50 percent of the cost for sealing a well. Cost-share payments are capped at \$500 per project.

Chippewa County Land and Resource office administers low-interest loan programs to assist property owners with upgrading or replacing a failing septic system and/or for repairing or replacing a damaged or contaminated well. Loan terms are for 5 or 10 years with an interest rate of 1% for septic improvements and 3% for wells. This loan amount is added to property taxes as a special assessment with payment due twice a year along with property taxes or as your escrow is set up.

Income-Based Septic System Grants

The county also administers an income-based grant program that is available to property owners in Chippewa County that have an existing noncompliant septic system. Funds are intended to fix septic systems that are currently failing codes or functionality.

Minimum Grant Qualifications:

- Funding must be for a homesteaded single-family home with an existing, failing subsurface sewage treatment system (SSTS) in Chippewa County
- The applicant must be the owner of the property
- Taxes must be current
- Income guidelines must be met



Septic Progress Continues in Chippewa

Chippewa County had another busy year installing septic systems. Human health and the environment are threatened by poorly functioning septic systems. All our efforts at the county are aimed at fixing septic systems that likely are not removing pathogens, nutrients and other chemicals from wastewater before it enters our groundwater, lakes and streams. Protecting local waterways and underground drinking water sources is everyone's responsibility.

- 31 permits were issued for new subsurface sewage treatment systems (SSTS)
- 23 of those systems were completed to bring properties into compliance
- 8 systems were for new construction.

RURAL HOMEOWNERS AND LANDOWNERS

Take advantage of the 3% Low Interest Loans available for ANY Practice that Improves Water Quality!
 Funds can be paired with some cost-shared practices.

For criteria and eligibility guidelines, contact Chippewa County Land & Resource Management Office at 320-269-6231.

- | | | |
|------------------------|------------------------|--|
| • CONSERVATION TILLAGE | • CHEMICAL MANAGEMENT | • SEPTIC SYSTEMS |
| • EROSION CONTROL | • FEEDLOT IMPROVEMENTS | • WELL RELOCATION, SEALING OR DRILLING |
| • WETLAND RESTORATION | • MANURE MANAGEMENT | • FIELD WINDBREAKS |

For more information about the AgBMP Loan Program eligible practices visit www.mda.state.mn.us/agbmploans



Chippewa County Local Water Plan...Locally driven programs to protect your soil & water resources!

For more information on wells and SSTS please contact Land & Resource Management at 320-269-6231.

Manage your Household Hazardous Waste Safely

FREE

Service for Households

Please bring your household hazardous waste products **year round** to:

Kandiyohi County Regional Household Hazardous Waste Facility
1404 SW 22nd Street
Willmar, MN 56201

Monday—Friday, 8:00 a.m. to 4:00 p.m.

NOTE: If you have an unusually large amount of waste, please call ahead so they are prepared for you: Phone: 320-231-3587

CLEAN SHOP PROGRAM

for Businesses or Ag Pesticide Disposal

NOTE: Businesses and Farmers with ag chemicals **MUST CALL** for an appointment at 320-231-3587.



Sponsored by the Chippewa County Land & Resource Management Department, Kandiyohi County Regional Hazardous Waste Program and the MN Pollution Control Agency. Questions? Call 320-269-6231 or go to WWW.CO.CHIPPEWA.MN.US.



The hazardous materials below are required to be recycled by Minnesota State Law:

- **USED MOTOR OIL & OIL FILTERS:** Recycle oil and oil filters any place in the State of MN that provides oil change services.
- **VEHICLE BATTERIES:** Recycle auto batteries at any business that sells auto batteries.
- **RECHARGABLE BATTERIES, SMALL SEALED LEAD ACID (often labeled "PB-acid" or "lead acid"), NICKEL CADMIUM (often labeled "Ni-Cad"), LITHIUM (often labeled "Li", "CR", or "BR"):** Drop off FREE at Land & Resource Management or check with local lumber yards.
- **TIRES:** most tire dealers accept tires for recycling (for a fee) as does the Chippewa County Recycling Center.
- **FLUORESCENT or HIGH INTENSITY DISCHARGE LAMPS:** These are accepted for recycling at the HHW Facility in Willmar for a fee. *Note: watch for annual county collections when homeowners can dispose of bulbs for free and businesses for a discounted charge.*
- **MERCURY:** Any products containing mercury such as thermostats, thermometers, electric switches, medical or scientific instruments or any other devices from which the mercury has not been removed for reuse or recycling. Drop off FREE at Land & Resource Mgmt. or bring to HHW Facility.

A FREE & SAFE disposal option for PHARMACEUTICAL WASTE

Don't flush medications!



Take it to THE BOX!

Wastewater treatment and individual septic treatment systems cannot remove most medications. Proper disposal of medication helps protect our environment.

Rules:

- **YES!** Only deposit unneeded and/or expired prescriptions, over-the-counter medication for both humans and animals, and illegal drugs.
- **NO!** Radioactive chemo drugs or IV bags, needles or syringes, garbage or trash.

Locations: Montevideo Police Department, Chippewa Co. Sheriff's Department and CCM Health

Questions? Please call Chippewa County Land & Resource Management at 320-269-6231

AVAILABLE FOR ALL CHIPPEWA COUNTY RESIDENTS

Tom Warner Retires!



After 40 years of dedicated service to conservation and landowners and operators of Chippewa County, Tom Warner planted his last tree with the Chippewa SWCD during the spring 2023 tree season. He officially retired July 31, 2023. Tom took with him many years of experience and knowledge of district programs, services, and the landowners he served. Over the years, Tom helped sell and plant over 400,000 trees in Chippewa County! Tom was also the local representative for the Wetland Conservation Act. He coordinated the design and installation of many conservation practices and structures. Tom helped educate students, landowners, co-workers, partners, senators, representatives, and other constituents through various events over the years. He also worked well with his board members, co-workers, staff, and conservation partners. Tom was imperative in getting several SWCD programs off the ground, including but not limited to, the weed badger program, the chemical spray program for trees, SWCD services such as roto-tilling, site prep, fabric/mulching, and disking. During Tom's tenure, he was successful in restoring roughly 10,000 acres of marginal cropland and riparian areas into permanent CREP/RIM easements, along with individual habitat improvement projects on those acres. Thank you Tom, and congratulations!



Tom's Last Tree with the SWCD!

CALL TODAY!

We have cost-share money to help with the cost, design, and installation of projects that reduce erosion and improve water quality

www.hawkcreekwatershed.org

320-523-3666

Examples of projects:

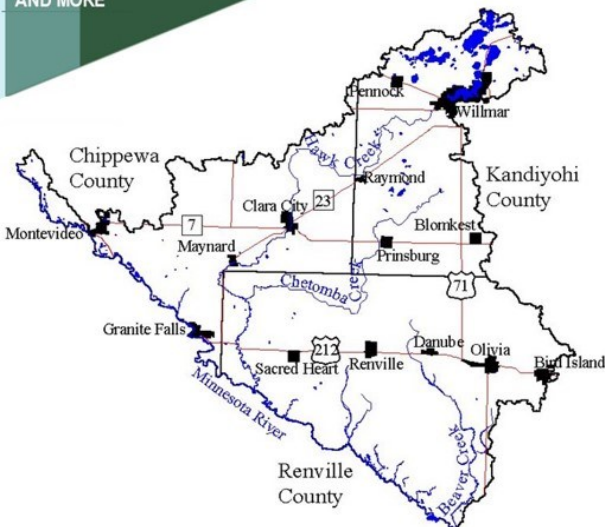
- WATER/SEDIMENT CONTROL BASINS
- GRASS WATERWAYS
- RETENTION PONDS
- WETLAND RESTORATIONS
- AND MORE
- GRADE/BANK/GULLY STABILIZATIONS
- ALTERNATIVE INTAKES
- AG WASTE

DO YOU OWN OR FARM LAND

that has erosion or water problems?

See maps below for locations eligible for cost-share.

We can help.



www.hawkcreekwatershed.org

320-523-3666

Renville County Courthouse,
Lower Level
500 E DePue Ave, Ste 104
Olivia, MN 56277

Steven Sunderland Retires!



Steven Sunderland resigned from the Chippewa SWCD Board of Supervisors after 35 years of service. While serving as a Chippewa SWCD Supervisor, Steve took on several other roles that have been important in advocating for conservation needs in Chippewa County, Minnesota, and nationally. Steve was appointed to the Board of Water and Soil Resources (BWSR) board by Governor Mark Dayton in 2012. He served on the BWSR Board through 2022. Steve is a Past President of the Minnesota Association of Soil & Water Conservation Districts (MASWCD) Board and is a past Officer with the National Association of Conservation Districts (NACD). In 2013, Steve was awarded MASWCD Supervisor of the Year. Steve shined lights on the conservation needs in the Midwest and advocated for clean water and natural resource protection within the farming community he is a part of and resides in. Thank you Steve for your many years of aiding conservation!

2023 Rain Gauge Report

Volunteer Monitor	Total in Inches
Kriste Erickson 119-41-02 April-October	16.48
Dan Benson 119-38-05 April 20-October	15.79
Richard Huber 117-40-06 January-December	25.83
Marvin Timmons 119-37-19 May-October	15.03

Our rain gauge monitor volunteers partner with the Minnesota Department of Natural Resources State Climatology Office. We are thankful to have dedicated rain gauge monitors in our county to provide accurate precipitation records. This climate data is used to explain past events and to assist planners in defining future climate scenarios. It can also be used to address questions involving the impact of climate on Minnesota and its citizens.

2023 NRCS Report

By: Shantel Lozinski, USDA-NRCS

NRCS has had an extremely successful year with plan writing, obligating funds to Chippewa County producers and practice installation. This year through the Environmental Quality Incentive Program (EQIP) and the Conservation Stewardship Program (CSP), we obligated over \$615,000 to new contracts that included practices such as cover crops, nutrient management, pest management, tree plantings, field borders, conservation cover, pollinator plantings, and brush management. We paid out over \$1.6 million in 2023 for practice installation in the EQIP and CSP programs. A few highlights worth noting were: we completed two large ag waste projects in the county this year and we have over 2,500 acres of cover crops planted last fall. It is great to see animal agriculture investments in the county. The Conservation Reserve Program (CRP) also had a great year with 58 plans written of which 19 were new and 39 were re-enrollments. NRCS staff can take applications year-round and work on plans focused on set program deadlines for potential funding.

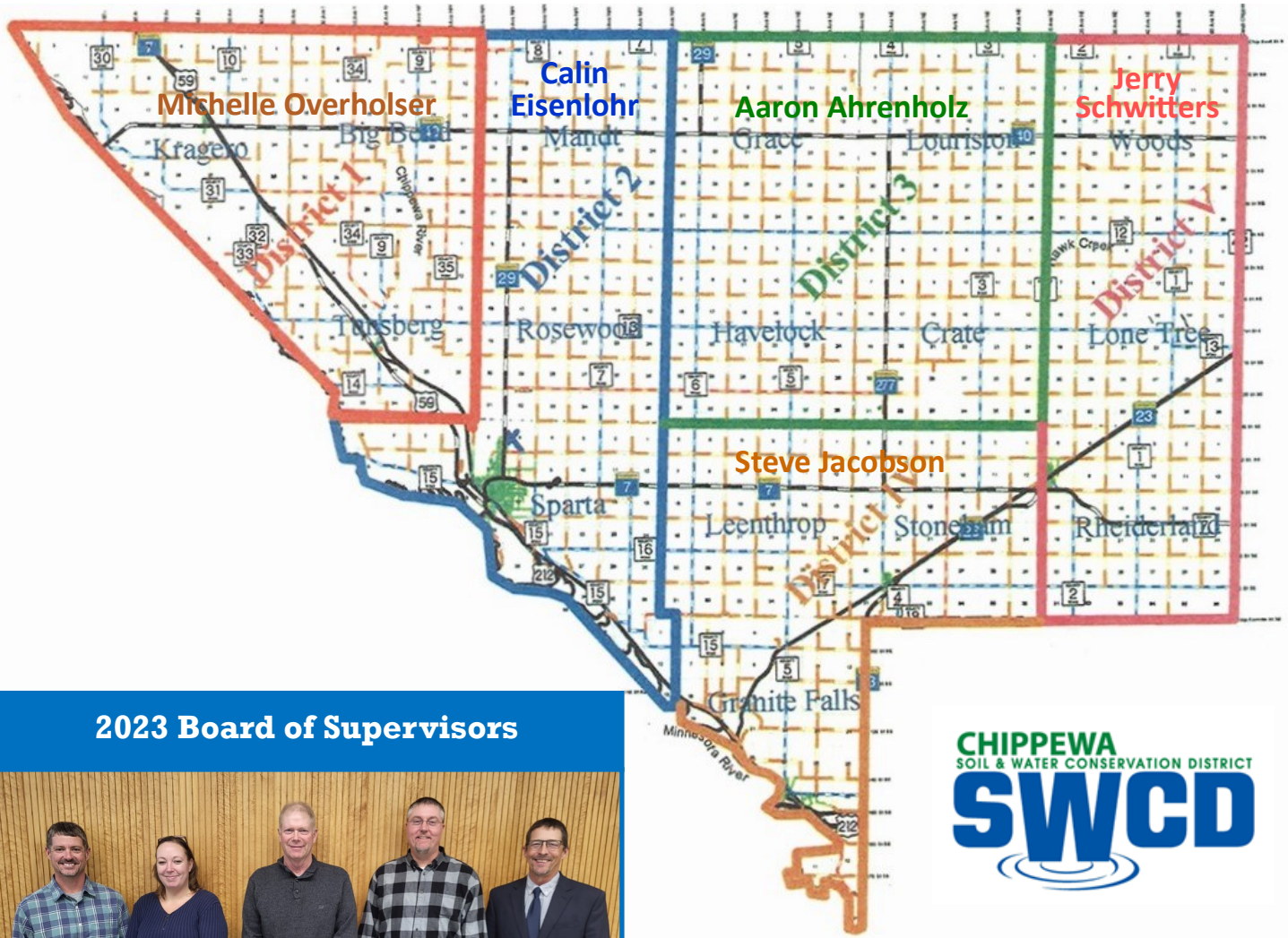
We remain short staffed in some of our local NRCS offices so I'm continuing to assist in the Big Stone NRCS office. If you need assistance with something or want to drop in, please consider calling to make an appointment so that staff are available to help you. If you have a project or would like a site visit, spring is a great time to start the planning process. Give our office a call at 320-269-2139 ext. 3007 to start the process.

The Natural Resources Conservation Service provides leadership in a partnership effort to help people conserve, maintain, and improve our natural resources and environment.

USDA is an Equal Opportunity Provider, Employer and Lender.



Chippewa SWCD Districts



2023 Board of Supervisors



Board of Supervisors L-R: Calin Eisenlohr, Michelle Overholser, Steve Jacobson, Aaron Ahrenholz, and Jerry Schwitters

Contact us!
Office: 320-269-2696

Staff Direct Line:

Zach Bothun: 320-269-2695

Desirae Jarett: 320-269-2692

Tom Sletta: 320-269-2693

Email:

zach.bothun@swcd.chippewa.mn

desirae.jarett@swcd.chippewa.mn

tom.sletta@swcd.chippewa.mn

District Staff



Zach Bothun-District Manager, Tom Sletta-District Technician, Desirae Jarett-Office & Financial Coordinator



www.chippewaswcd.org

www.facebook.com/chipswcd